

### PRODUCT OVERVIEW



The X-11s™ 2-relay expansion module is used in conjunction with the X-600M™ controller.

The X-11s has two high-current relays. Both relays have Form-C contacts (SPDT). A rugged, high-current connector provides connections to the relays. One or more X-11s expansion modules can be connected to a X-600M control module with a ribbon cable. The ribbon cable provides both power and communications to the expansion modules.

The X-600M is a multifunction web-enabled industrial I/O controller. It performs control, logic, and monitoring functions similar to that of a Programmable Logic Controller (PLC). However, unlike a PLC, the X-600M is designed for web-based applications from

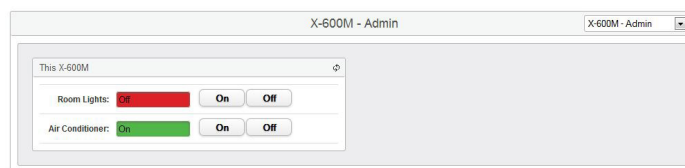
the ground up. No add-on software or hardware is required.

The X-600M can be fully configured, programmed and tested using its built-in web server. The web setup pages are intuitive and easy to use and do not require special programming skills.

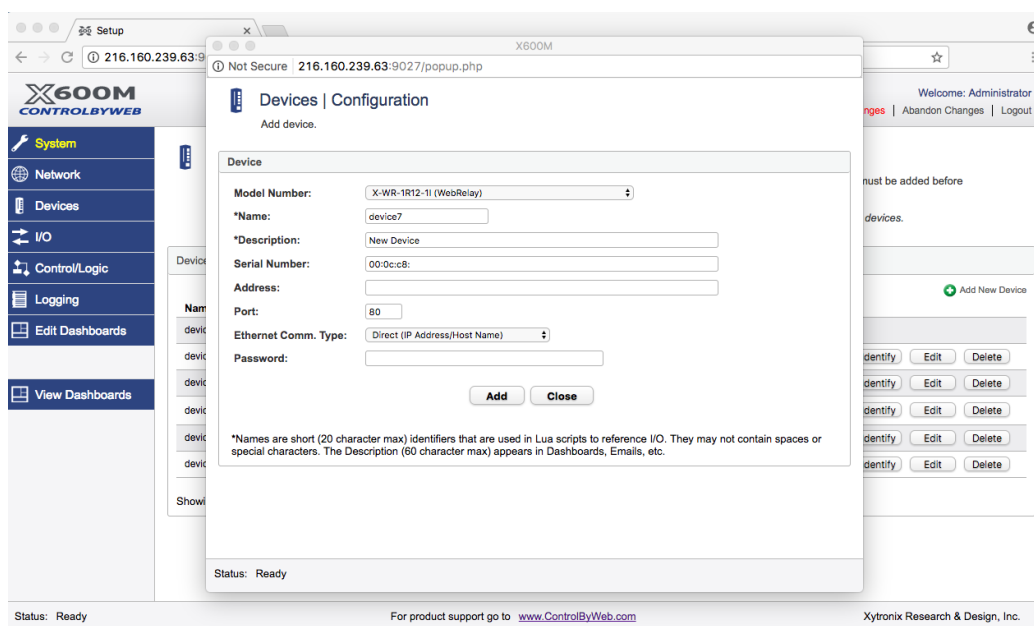
The X-600M together with expansion modules such as the X-11s provide an easy, flexible and reliable way to monitor and control systems and devices over a network. The X-11s is suitable for use with loads which require line voltages and high current such as pumps, motors, lights and heaters.

### Features:

- Two, large SPDT relays (277VAC and 20 Amps) independently controlled
- Removable locking connector supports 24AWG to 10AWG
- Two relay LEDs
- Removable terminal connector
- Powered through expansion bus
- Great for applications including:
  - Lighting control
  - Door locks
  - Remote gate control
  - Motor control
  - Pumps
  - and much more...



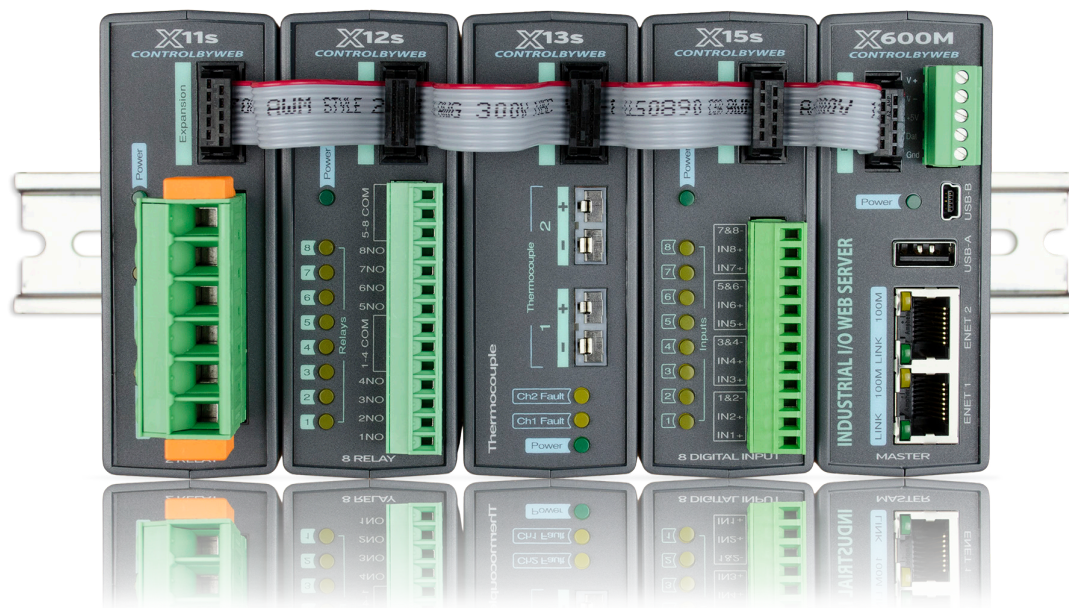
View X-11s components on the X-600M's Dashboard



Adding the X-11s on the X-600M

### APPLICATIONS & SPECS

#### Expansion Modules With The X-600M Controller



#### Applications

- ✓ **Lighting Control**
- ✓ **Door Locks**
- ✓ **Remote Gate Control**
- ✓ **Motor Control**
- ✓ **Pumps**
- ✓ **More...**

#### Models:

- X-11s

#### Power Requirements

- Voltage: 9-28 VDC (supplied via the X-600M controller, 24V recommended)
- Max Current: See table below for typical values at 25°C.

Power Supply	All Relays OFF	All Relays ON
9 VDC	15 mA	260 mA
12 VDC	12 mA	196 mA
24 VDC	7 mA	105 mA

#### Relay Contacts

- Number of Relays: 2
- Max Voltage: 277VAC, 110VDC (NO contact), 30VDC (NC contact)
- Max Current: 20A
- Contact Type: SPDT (Form 1C)
- Load Type: General Purpose
- Contact Resistance: < 30 milliohms initial
- Contact Material: AgSnO2
- Electrical Life: 100K cycles (Typical)
- Mechanical Life: 10M cycles (Typical)
- Environmental Rating: Over voltage Category II, Pollution Degree 2
- Relay Modes: On/Off or Pulsed
- Pulse Timer Duration: 0.1 to 86,400 Seconds (1-day)

#### Connectors

- Relays: 6-Position, 7.62mm, Removable (with tool-free snap-lock latches)
- Expansion Connector: Ribbon cable, 10-conductor, polarized, 2x5-position, 0.100" pitch Provides power and communications for expansion modules (Communications: RS-485)

#### LED Indicators

- Number of LEDs: 3
  - Power on
  - Relay coil energized 1-2

#### Physical

- Size:
  - 1.41in (35.7mm) wide
  - 3.88in (98.5mm) tall
  - 3.1in (78mm) deep (not including connector)
- Weight: 4.8 oz (136 g)
- Enclosure Material: Lexan 940 Polycarbonate Plastic
- Enclosure Flame Rating: UL94 V0

#### Environmental

- Operating Temperature: -40°F to 150°F (-40°C to 65.5°C)
- Storage Temperature: -40°F to 185°F (-40°C to 85°C)
- Humidity: 5-95%, non-condensing
- Altitude: Up to 2,000m
- Indoor use or NEMA-4 protected location

#### Electromagnetic Compliance

- IEC CISPR 22, CISPR 24
- FCC 47CFR15 (Class B)
- EN55024 ITE Immunity (2010)
- EN55022 Emissions (2010)

#### Product Safety Compliance

- UL 61010-1
- E468316-A1
- CSA-C22.2
- CCN: QUXX, QUXX7

